

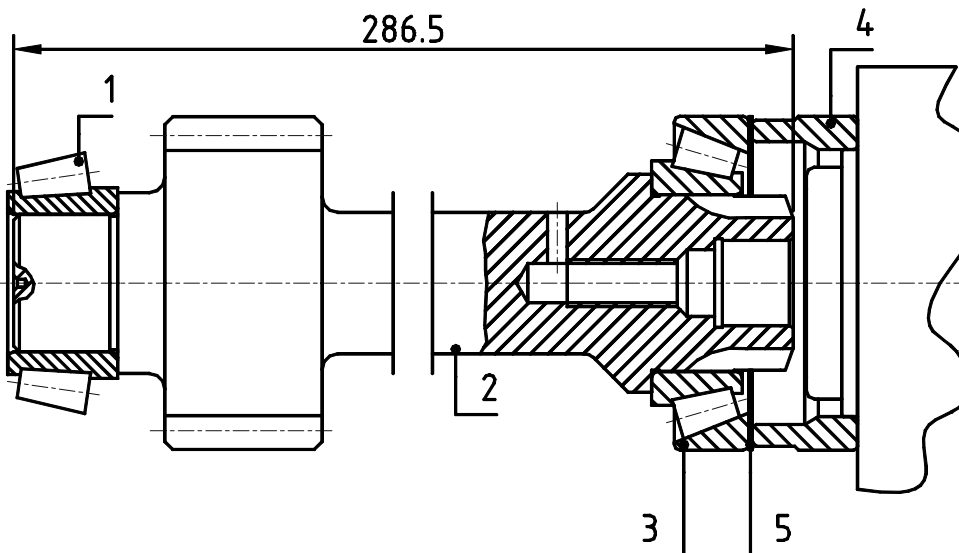


ADAPTER KIT TO POWER TAKE OFFS ZF

9-S-109/10.25 ; 9-S-109/10.24 ; 16-S-109/11.86 ; 16-S-109/13.53

Ref. VK4019S
VK4019AM

Main Dimensions



- 1 – Bearing
- 2 – Adapter Shaft VK4019
- 3 – Bearing
- 4 – Adapter Flange
- 5 – Adjustment Washer

Main Data

| | |
|---------------------------------|------------------------|
| Continuous Torque (Nm) | 300 |
| Intermittent Torque (Nm) | 420 |
| Power (at 1000 r.p.m) | 42 H.P. / 32 Kw |
| Weight (Kg) | 4.7 |
| Engine to PTO ratio | |
| 9-S-109 / 10.25 | .- 1 : 0.770 |
| 16-S-109 / 11.86 | High .- 1 : 0.880 |
| | Normal .- 1 : 0.750 |
| 16-S-109 / 13.53 | High .- 1 : 0.930 |
| | Normal .- 1 : 0.790 |

Note 1:

For getting the correct ratio is necessary to multiply the above mentioned ratio by the internal ratio in all S6-90 releases.

Example:

Gearbox 9-S-109 / 10.25 Adapter Kit + ZF S6-90 (Ref. TF4002AMP) Internal Ratio 1:1.32

Final ratio: .- 1 : 1.016 (0.770 x 1.32 = 1.016)

Note 2:

Adapter Kit is supplied without studs. Please use those that are provided with the PTO.

ABER is constantly engaged in improving its products and, therefore, reserves itself the right to modify without any further notice the characteristics shown. The gear boxes are in constant change; therefore, ABER is not to be held responsible for any damage resulting from wrong application or application of outdated material.



ABER - Embraiagens e Comandos Hidráulicos - A. B. LDA

Rua Francisco de Almeida, Nº 30 – Vila Nova da Telha – 4470 MAIA - Portugal

Telephone: +351.22.9438070 Fax: +351.22.9420823 e-mail: aber@aber.pt <http://www.aber.pt>