

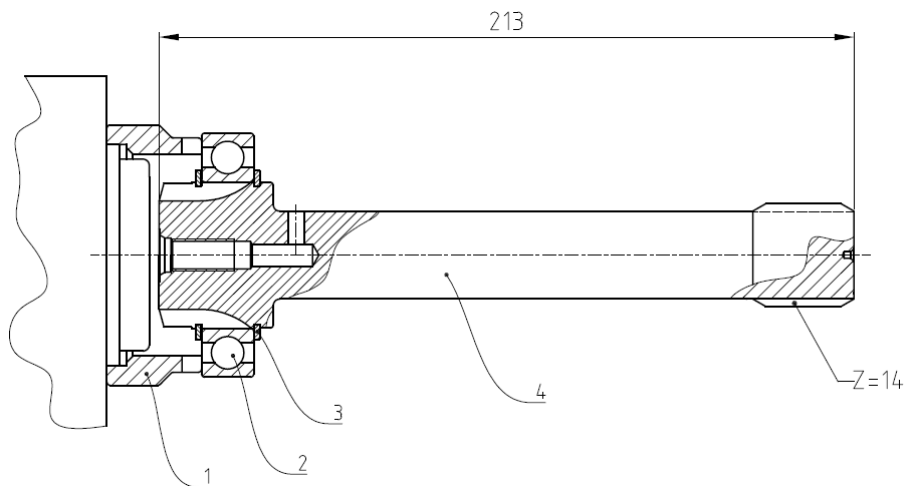


ADAPTER KIT TO POWER TAKE OFFS ZF

8-S-151; 16-S-151 ; 16-S-181 ; 16-S-221 ; 16-S-1620 TD ; 16-S-1820 TO;
16-S-1920 TD;16-S-2220 TO/TD; 16-S-2520 TO; 8S-1620 TD; 8S-1820 TO;
8S-220 TO; 16S-2320 TD; 16S-2330 TD; 16S-2720 TO; 16S-2730 TO

Ref. VK4001S
VK4001AM

Main Dimensions



- 1 – Spacer
- 2 – Bearing
- 3 – Circlip
- 4 – Adapter shaft VK4001

(Dimensions in mm)

Main Data

Continuous Torque (Nm)	600
Intermittent Torque (Nm)	840
Power (at 1000 r.p.m)	85 H.P. / 64 Kw
Weight (Kg)	1.7
Engine-Kit adapter ratio	

8-S-151 / 13.79 - 1:0.920

8-S-1620 TD / 13.80-1.0 - 1:0.910

8-S-1820 TO / 11.54-0.84 ; 8-S-220 TO / 11.54-0.84 - 1:1.090

16-S-151 / 13.85-0.84 High:- 1:0.920 Normal:- 1:0.770
/ 16.53-1.00 High:- 1:0.920 Normal:- 1:0.770

16-S-221 / 13.85-0.84 High:- 1:0.920 Normal:- 1:0.770
/ 16.53-1.00 High:- 1:0.920 Normal:- 1:0.770

16-S-181 / 13.85-0.84 High:- 1:0.920 Normal:- 1:0.770
/ 16.53-1.00 High:- 1:0.920 Normal:- 1:0.770

16-S-1820 TO ; 16-S-2220 TO ; 16-S-2520 TO ; 16-S-2720 TO ; 16-S-2730 TO / 13.80-0.84 High:- 1:1.090 Normal:- 1:0.910

16-S-1620 TD ; 16-S-1920 TD ; 16-S-2220 TD ; 16-S-2320 TD ; 16-S-2330 TD / 16.41-1.0 High:- 1:0.910 Normal:- 1:0.770

Note 1: For getting the correct ratio is necessary to multiply the above mentioned ratio by the internal ratio in all S6-90 releases.

Example: Gearbox 16-S-151 / 13.85-0.84 Adapter Kit + ZF S6-90 (Ref. TF4002AMP) Internal Ratio 1:1.32

Final ratio: High .- 1 : 1.214 (0.920 x 1.32 = 1.214)

Normal .- 1 : 1.016 (0.770 x 1.32 = 1.016)

Note 2: Adapter Kit is supplied without studs.Please use those that are provided with the PTO.

ABER is constantly engaged in improving its products and, therefore, reserves itself the right to modify without any further notice the characteristics shown
The gear boxes are in constant change; therefore, ABER is not to be held responsible for any damage resulting from wrong application or application of outdated material



ABER - Embraiaçgens e Comandos Hidráulicos - A. B. LDA

Rua Francisco de Almeida, Nº 30 – Vila Nova da Telha – 4470 MAIA - Portugal

Telephone: +351.22.9438070 Fax: +351.22.9420823 e-mail: aber@aber.pt <http://www.aber.pt>

1/1